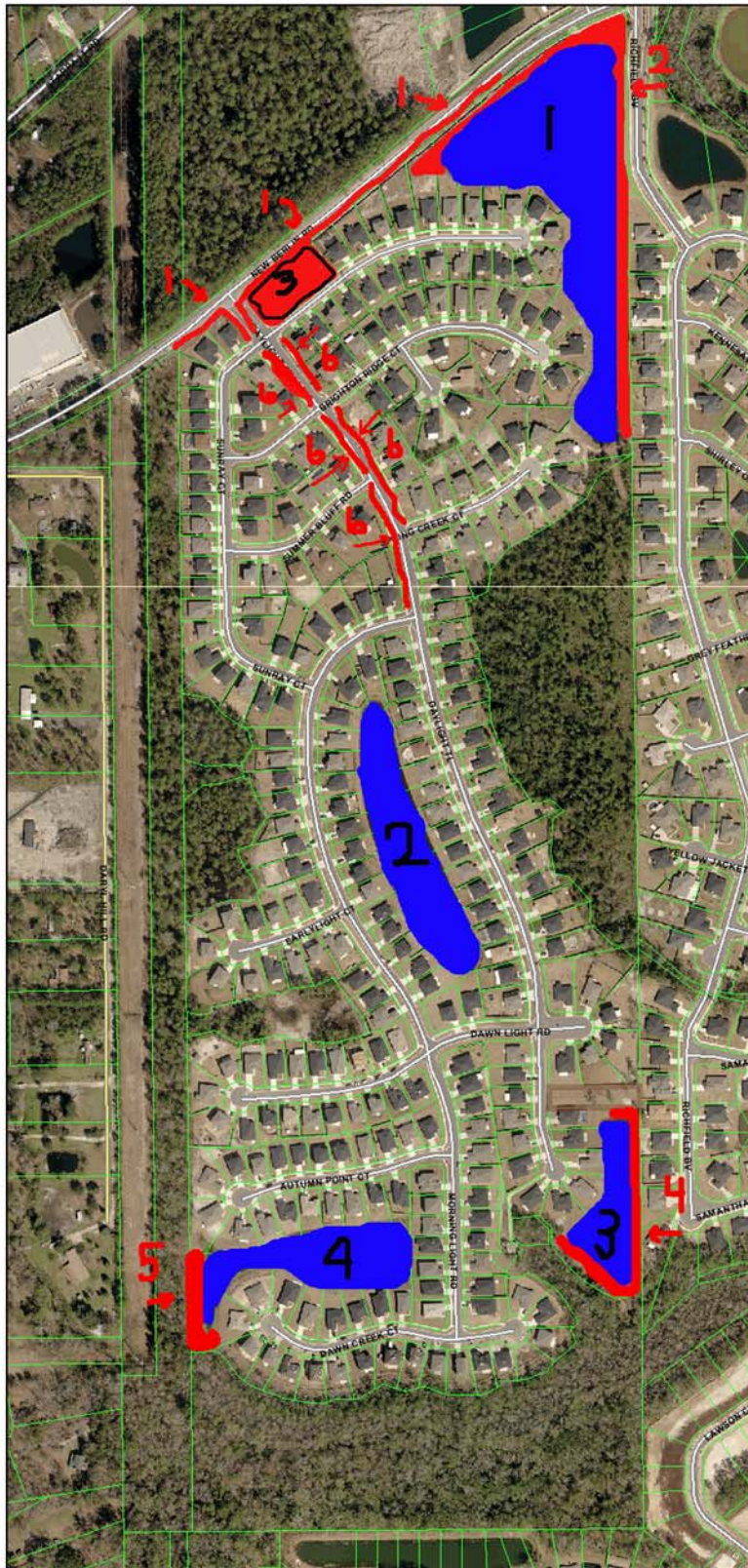


# DAYBREAK WOODS AERIAL MAP

Daybreak Woods Phase II Homeowners' Association, Inc.  
C/O Florida Property & Association Management, Inc.  
Post Office Box 350210, Jacksonville, FL 32235 (904) 757-7010



## Lawn Maintenance Areas

- 1: Front Entrance, Outer Fence and sidewalk
- 2: Retention Pond #1 Common Embankment
- 3: Playground
- 4: Retention Pond #3 Common Embankment
- 5: Retention Pond #4 Common Embankment
- 6: Common Entry Areas Along Daylight Trail

## Lake Maintenance Areas

- 1: New Berlin Rd Lake #1
- 2: Morning Light Rd Lake #2
- 3: Daylight Trail Lake #3
- 4: Dawn Creek Ct Lake #4

**RED AREAS INDICATE MONTHLY LAWN SERVICE AREAS**  
**BLUE AREAS ARE MONTHLY LAKE MAINTANANCE AREAS**